

Crassostrea gigas

Key Laboratory of Mariculture, Ministry of Education, Ocean University of China, Qingdao 266003, China
Laboratory for Marine Fisheries Science and Food Production Processes, Qingdao National Laboratory for Marine Science and Technology, Qingdao 266237, China

Keywords:
Crassostrea gigas

Crassostrea gigas

C. gigas

N - *H* - *H* -
N - -
F *F* -

1. Introduction

E-mail address:

C. gigas

2. Materials and methods

2.1. Selection, sample collections and DNA extraction

C. gigas

C. gigas

C. gigas

×

C. gigas

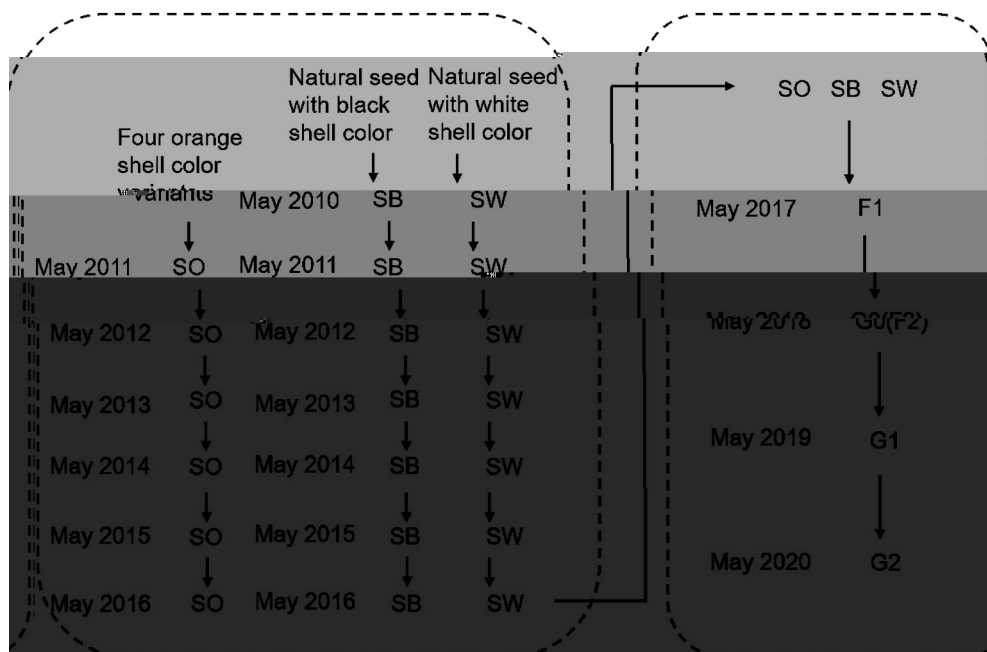


Fig. 1.

Table 4

<i>f.</i>		<i>N</i>	
<i>F</i> =			" "
<i>F</i> =			
<i>F</i> =		<i>N</i>	
<i>F</i> =			<i>N</i>
<i>F</i> =			<i>N</i>
<i>F</i> =			<i>N</i>
<i>F</i> =		<i>N</i>	
<i>P</i> <			
			<i>N</i>
		<i>N</i>	<i>N</i>
<i>N</i> <i>H</i> <i>H</i>			
	<i>F</i>		
	<i>N</i>		
			<i>F</i>
<i>H</i> -	-	<i>C. gigas</i>	
		-	<i>N</i> <i>H</i>
			<i>F</i> <i>Nei's D</i>
		<i>Argyrosomus japonicus</i>	<i>F</i> - <i>Nei's D</i> : -
		<i>Mytilus edulis</i>	
			<i>crassostrea virginiva</i>

Table 5

<i>F</i>	<i>Nei's D</i>	<i>C. gigas</i>

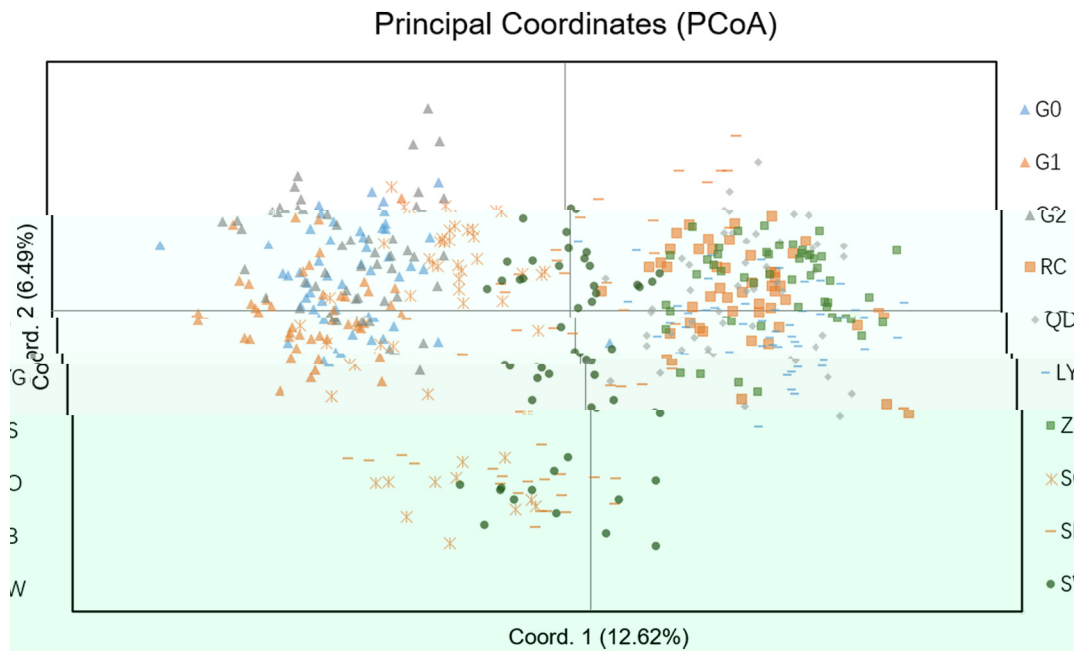


Fig. 2.

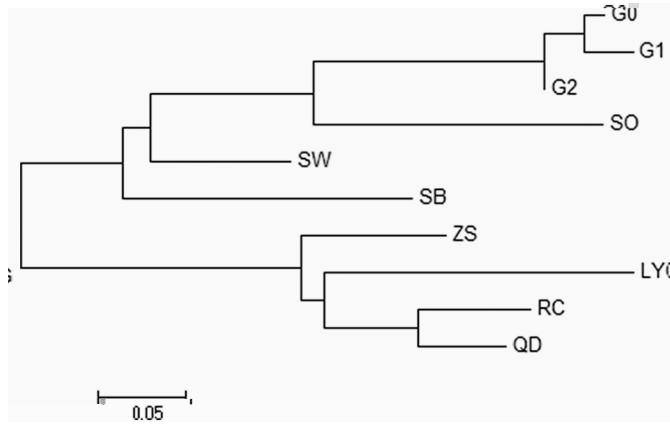


Fig. 3.

Dicentrarchus labrax

5. Conclusions

C. gigas

Declaration of Competing Interest

Acknowledgments

Appendix A. Supplementary data

